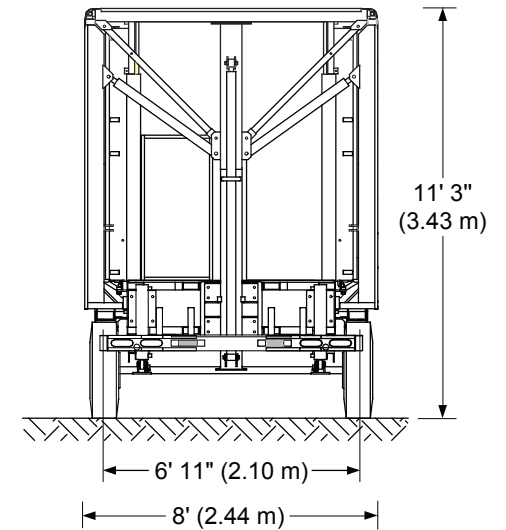
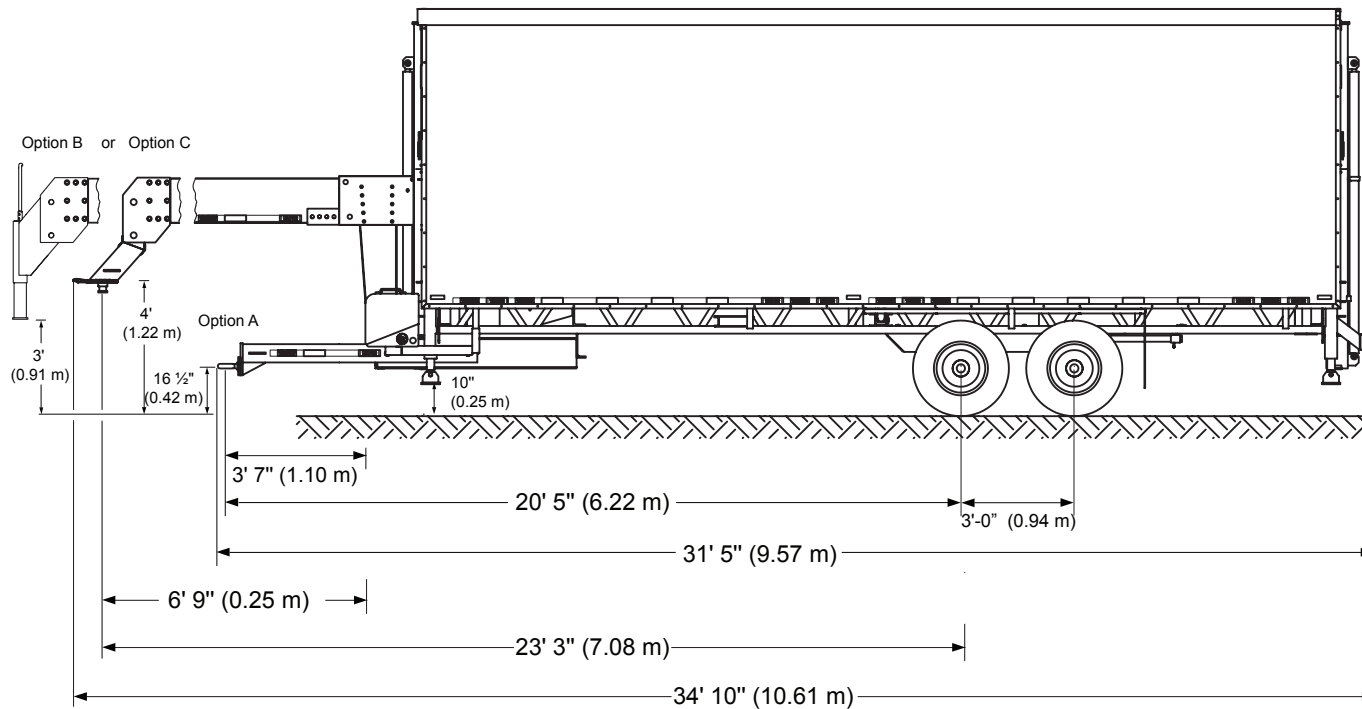


# Stageline SL 100

Units 218 to 449  
Units 451 to 455



## Trailer Hitch Options

Option A : Drawbar / Pintel eye

Option B : Gooseneck / Ball Hitch (2-5/16")

Option C : KingPin / Fifth Wheel

Mass	Unladen		Laden	
	Lbs	Kg	Lbs	Kg
Total Mass	9 990	4 531	12 990	5 891
Mass on Axle	8 150	3 697	-	-
Allowable Load on Axle	-	-	12 000	5 443
Mass on Hitch	1 740	790	-	-
Allowable Load on Hitch	-	-	3 000	1 360

## Mass & Dimensions

1. Mass may vary depending on options.
2. Technical specifications may change without notice.
3. Drawings are not to scale.

© 2013 - All rights reserved, MSR Mobile Stage Rentals. Any and all forms of adaptation or reproduction of this document including plans and drawings found herein, in whole or in part, are strictly forbidden without the written authorisation of MSR Mobile Stage Rentals.



**MEREK SWAIM**  
Mobile Stage Manager

615.295.6513  
merek@premierglobalproduction.com  
www.premierglobalproduction.com

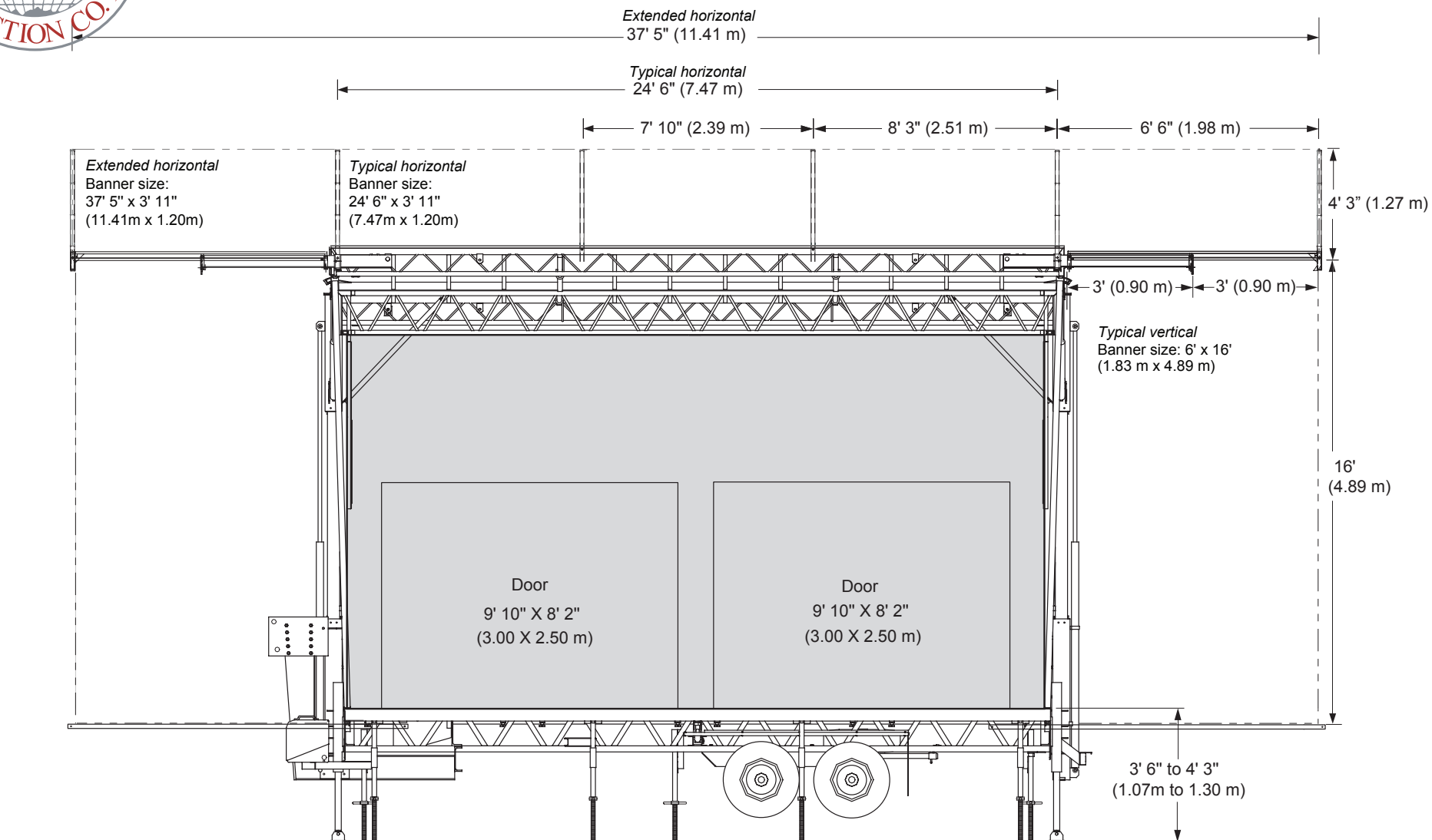
208 Space Park Drive South  
Nashville, TN 37211



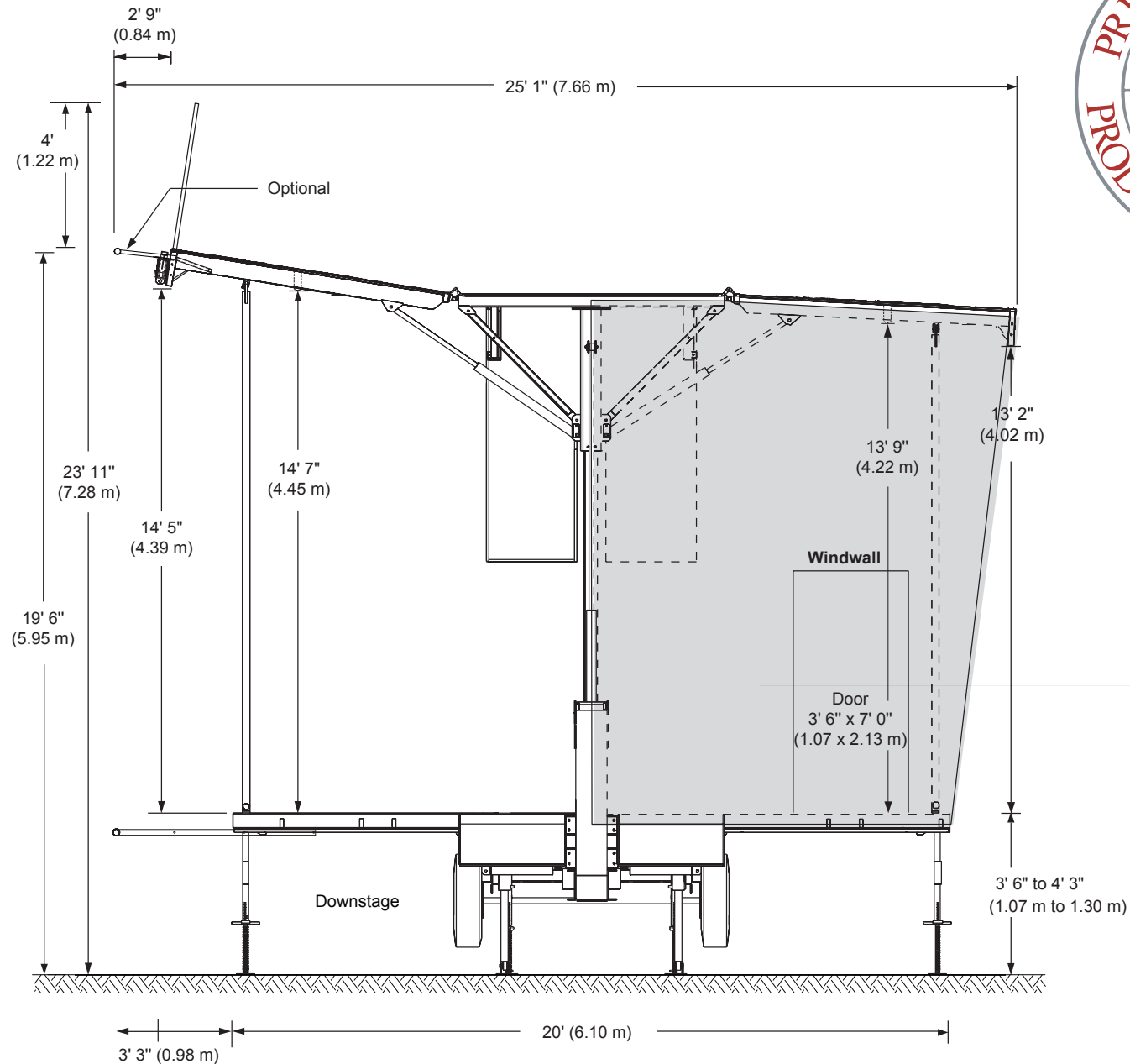
# Stageline SL 100

Units 218 to 449

Units 451 to 455



Front View with Windwall & Banner

Units 218 to 449  
Units 451 to 455

Stage specifications subject to change without notice.  
Figures are nominal.



**Stageline SL 100** Units 218 to 449  
Units 451 to 455



Downstage

Capacity: 100 lb/ft<sup>2</sup> (490 kg/m<sup>2</sup>)

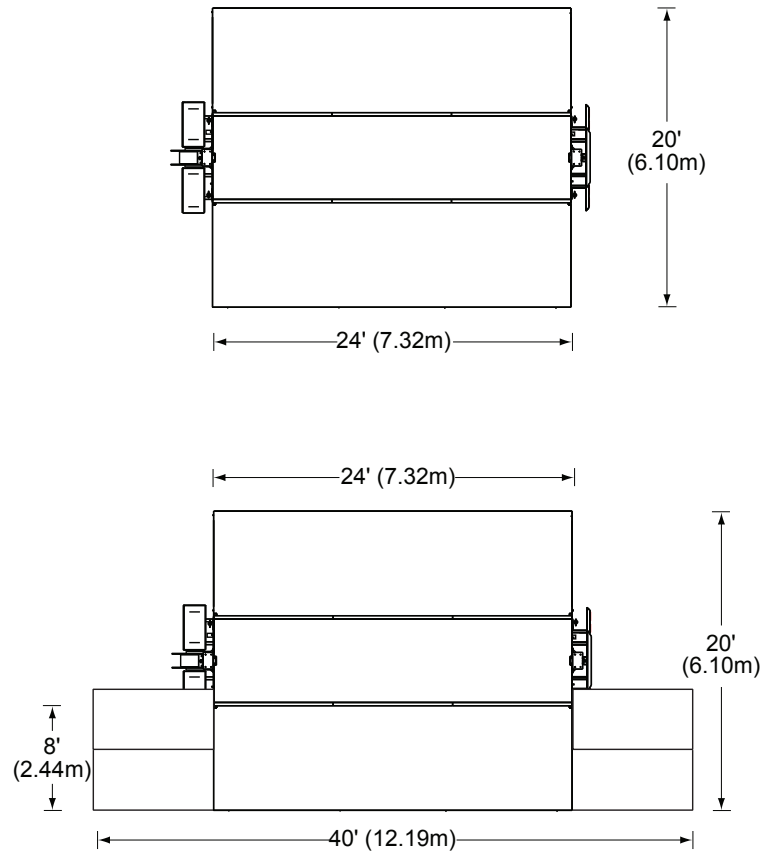
**Floor View**



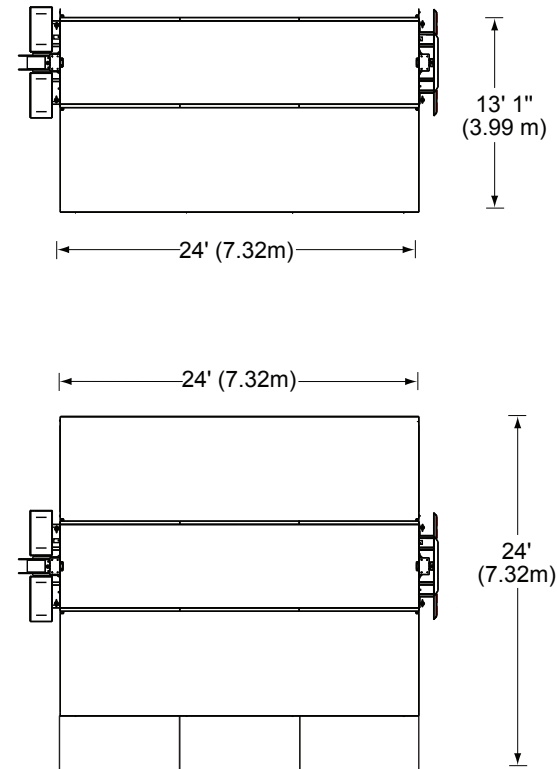
## Stageline SL 100

Units 218 to 449  
Units 451 to 455

### Standard



### Other Available Configurations



□ = 4' x 8' (1.22 m x 2.44 m)

N.B. One guardrail per 4' (1.22 m)

## Extension Platform Layouts

# Stageline SL 100

A thorough understanding of the inter-related loadings shown in this rigging plan is needed in order to safely use this mobile stage roof and to take full advantage of the many rigging opportunities it offers.

This mobile stage roof offers a variety of rigging options with regard to load capacity, placement and type.

There are a rigging pipe, trusses, roof rigging points and side overhang rigging beams.

This rigging plan locates and defines these rigging features, includes load capacity for each and describes maximum combinations of loads amongst features.

Take note of exclusions, maximum sub-totals in a group, load balance requirements, maximum lifting capacity of roof and maximum rigging load on roof.

The maximum load on the roof is less than the sum of the maximum load on each rigging feature.

## MAXIMUM ROOF LIFTING CAPACITY: 3800 lb (1725 kg)

### LIFTING RESTRICTIONS

Total load on T2 and P12s must not exceed 500 lb (227 kg) when using downstage P11s.

Total load on T2 and P12s can be increased to 850 lb to (380 kg) if not using downstage P11s.

Except for P10, all rigging points on T2 must be used in pairs such that total load will be evenly divided on the roof hydraulic struts.

## MAXIMUM LOAD BEARING CAPACITY: 5400 lb (2450 kg)\*

\* With all 4 corner posts installed and telescopic columns pinned.

### RIGGING RESTRICTIONS

Use P1s, P2s, P3s, P4s OR P5 on each T1 truss, maximum load of 1250lb.

Use P6s, P7s, P8s, P9s or P10 on each T2 truss, maximum load of 500lb.

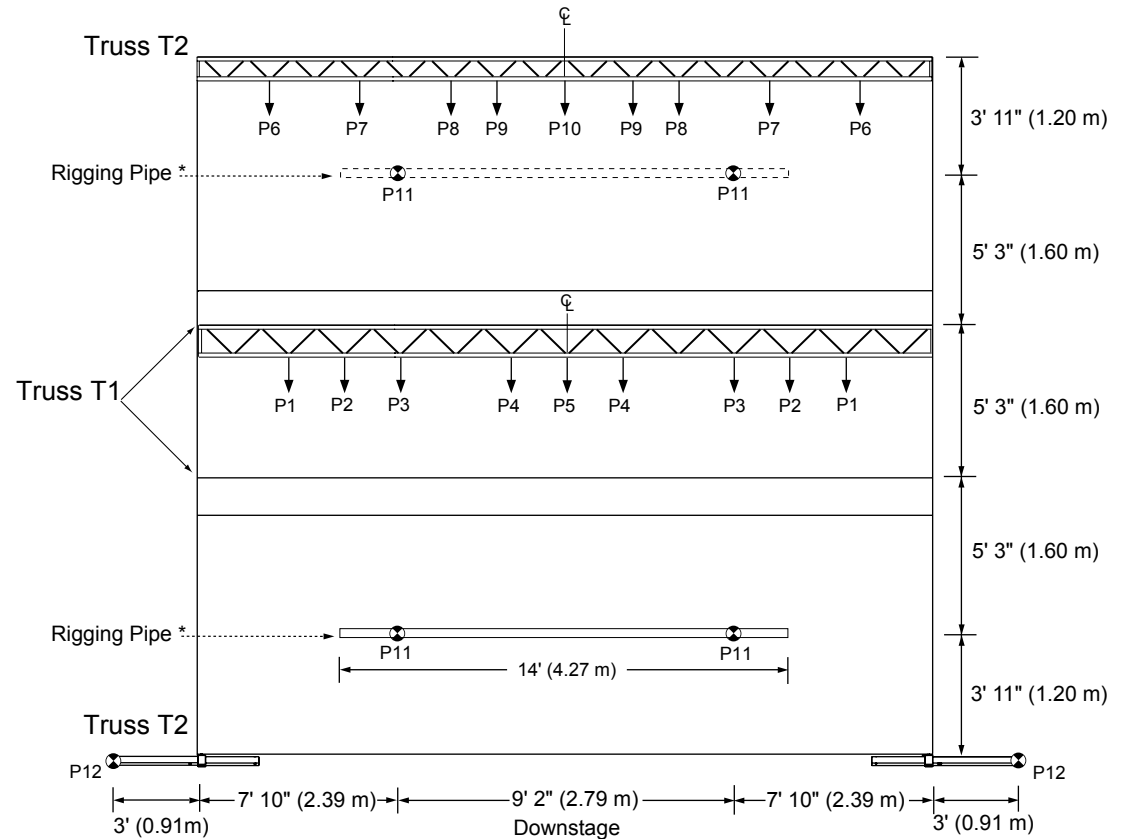
Do not load more than 30 lb/lin. ft (45 kg/lin. m) on rigging pipe.

All loads should be uniformly distributed.

Do not load more than 250 lb (115 kg) concurrently on P6s to P12s

When downstage corner posts are replaced by cylinder lock.

\*\* Loads on P12s can be increased to 800 lb (363kg) once all corner posts have been installed.

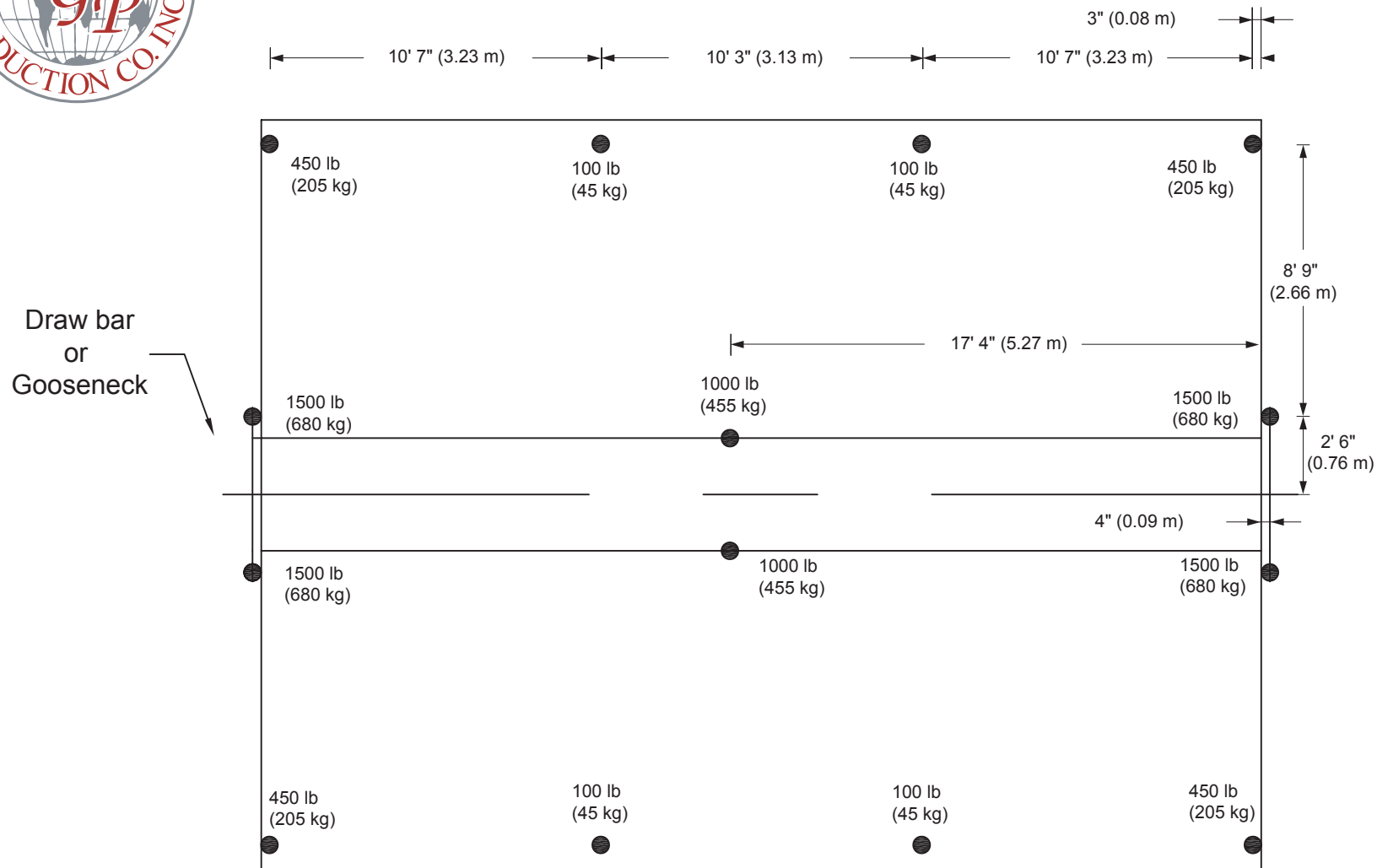


MAXIMUM LOAD CAPACITY		
Point No.	Lb	Kg
P12 **	425	190
P1, P2, P3 & P11	350	160
P4, P5, P6, P7 & P8	250	115
P9 & P10	175	80

## Rigging Plan - Unit No. 220 to 449 and 451 to 455



# **Stageline SL 100**      **Units 218 to 449** **Units 451 to 455**



● : Floor stabilizers, extension and levelling jacks.

Note: For additional live load information, refer to Stageline technical department.

## **Dead Load Ground Support**