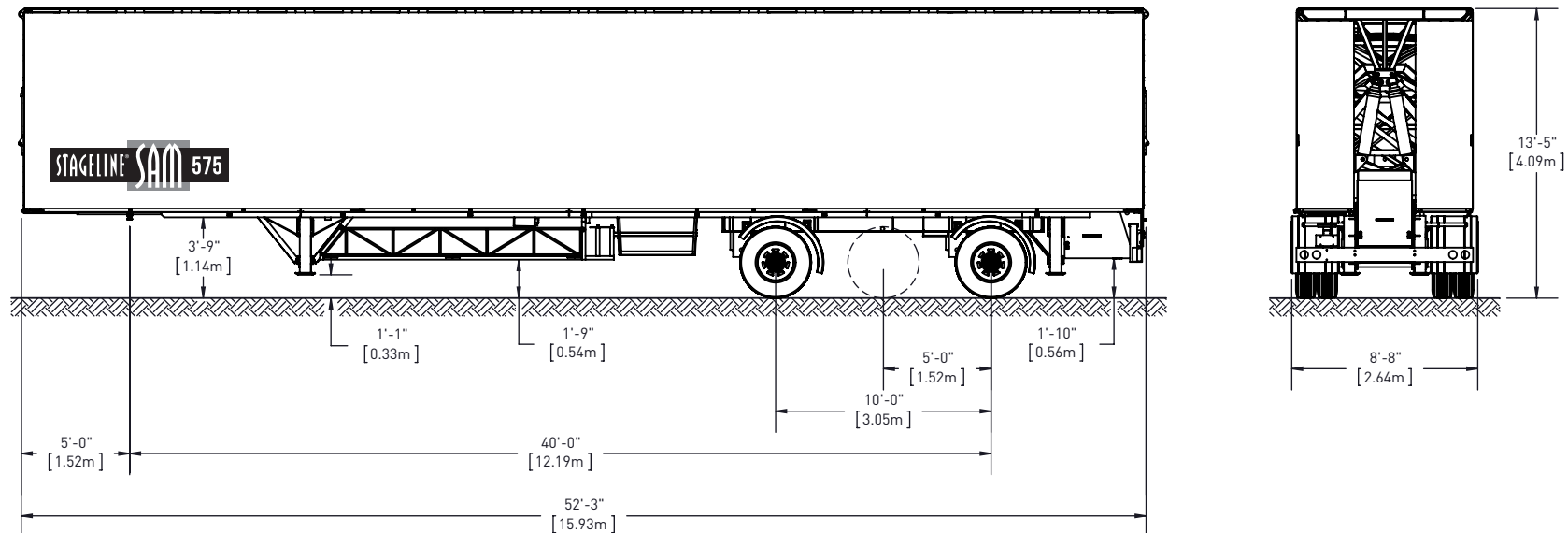




# SAM 575 COVERED WINGS

## MASS & DIMENSIONS

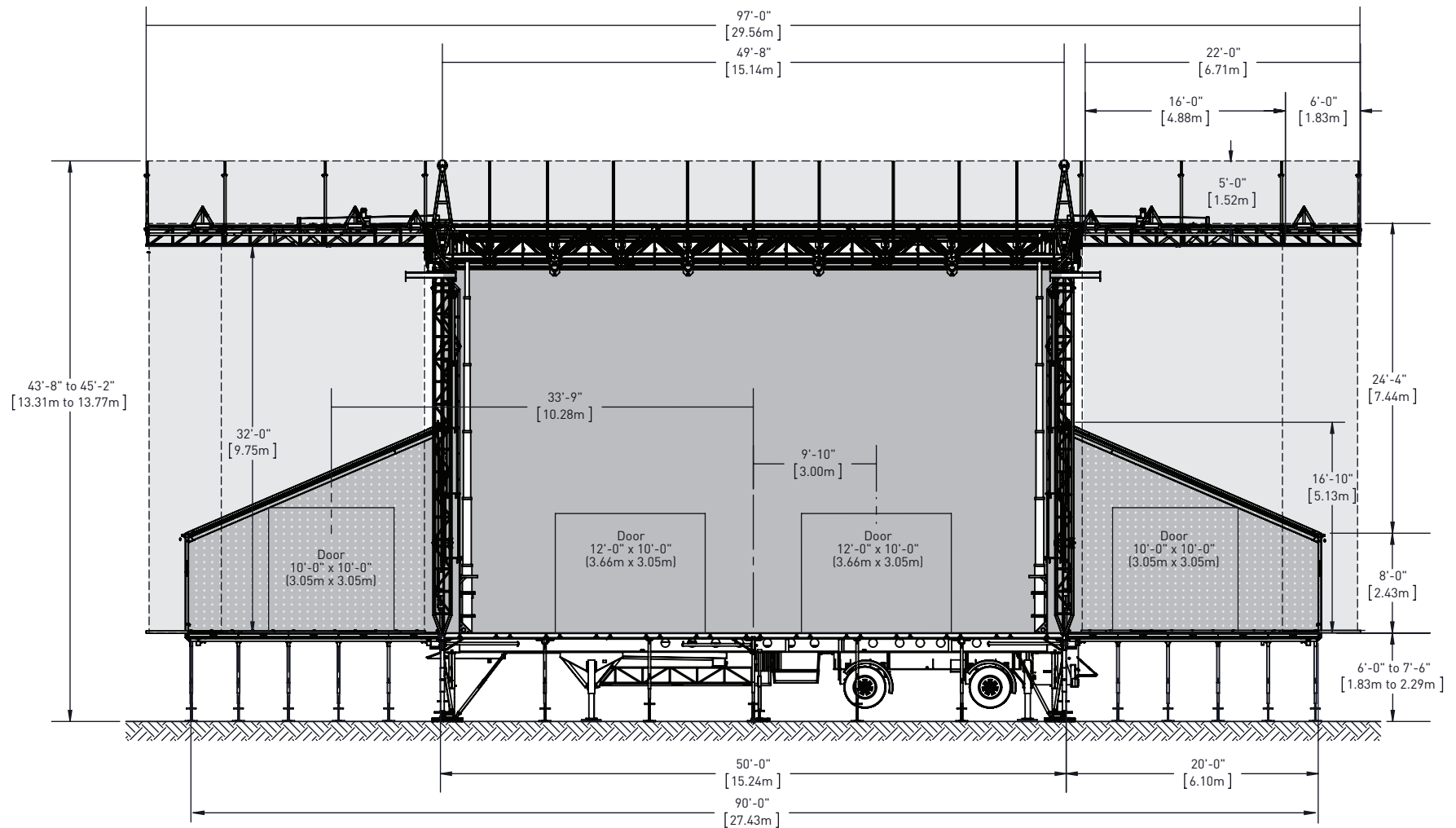


Mass SAM 575	Unladen		Standard Equipment		Maximum Capacity	
	Lbs	Kg	Lbs	Kg	Lbs	Kg
Total Mass	50229	22790	64313	29180	77140	35000
Mass on Axle	32421	14710	39782	18050	46000	20871
Mass on Hitch	17808	8080	24531	11130	31000	14065

Drawings may show stage equipped with optional accessories. May be purchased separately.

© 2015 - R01 - All rights reserved, Stageline Mobile Stage Inc. Any and all forms of adaptation or reproduction of this document including plans and drawings found herein, in whole or in part, are strictly forbidden without the written authorisation of Stageline Mobile Stage Inc. Mass may vary depending on options. Technical specifications may change without notice. Stage specifications subject to change without notice. Figures are nominal.

[stageline.com](http://stageline.com) | [info@stageline.com](mailto:info@stageline.com)

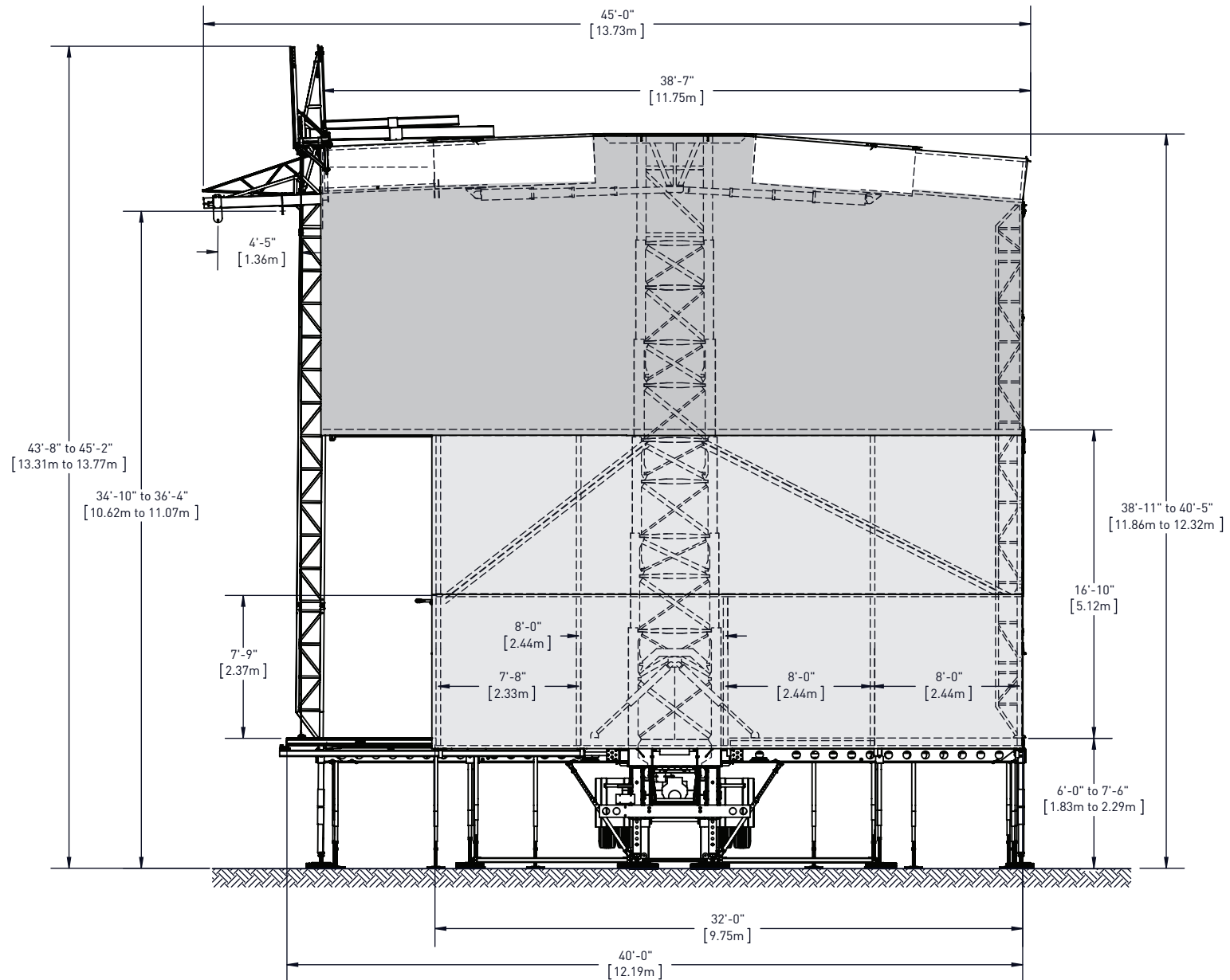


WINDWALL

BANNER (For banner dimensions, please refer to banner book)

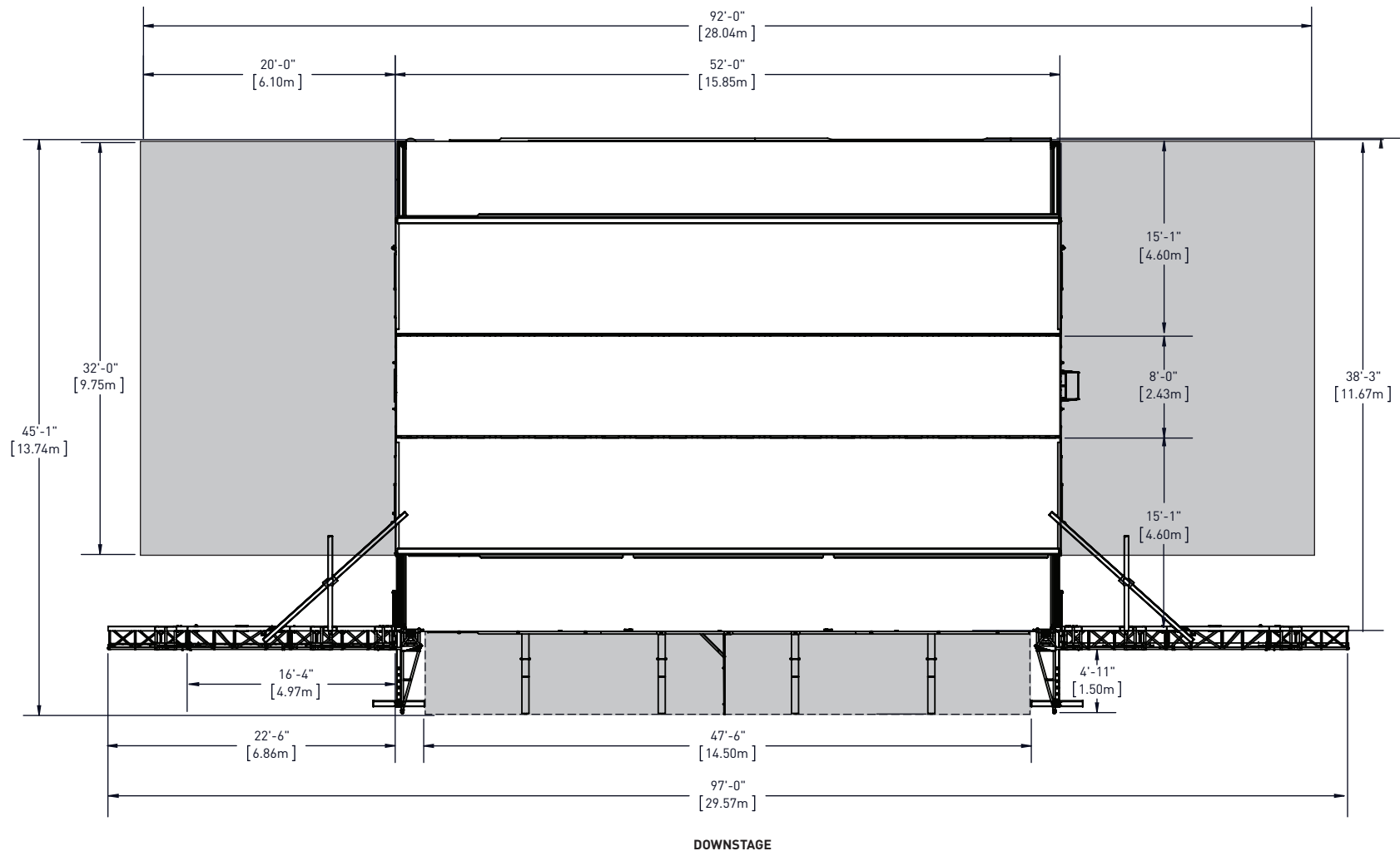
Drawings may show stage equipped with optional accessories. May be purchased separately.

© 2015 - R01 - All rights reserved, Stageline Mobile Stage Inc. Any and all forms of adaptation or reproduction of this document including plans and drawings found herein, in whole or in part, are strictly forbidden without the written authorisation of Stageline Mobile Stage Inc. Mass may vary depending on options. Technical specifications may change without notice. Stage specifications subject to change without notice. Figures are nominal.



Drawings may show stage equipped with optional accessories. May be purchased separately.

© 2015 - R01 - All rights reserved, Stageline Mobile Stage Inc. Any and all forms of adaptation or reproduction of this document including plans and drawings found herein, in whole or in part, are strictly forbidden without the written authorisation of Stageline Mobile Stage Inc. Mass may vary depending on options. Technical specifications may change without notice. Stage specifications subject to change without notice. Figures are nominal.

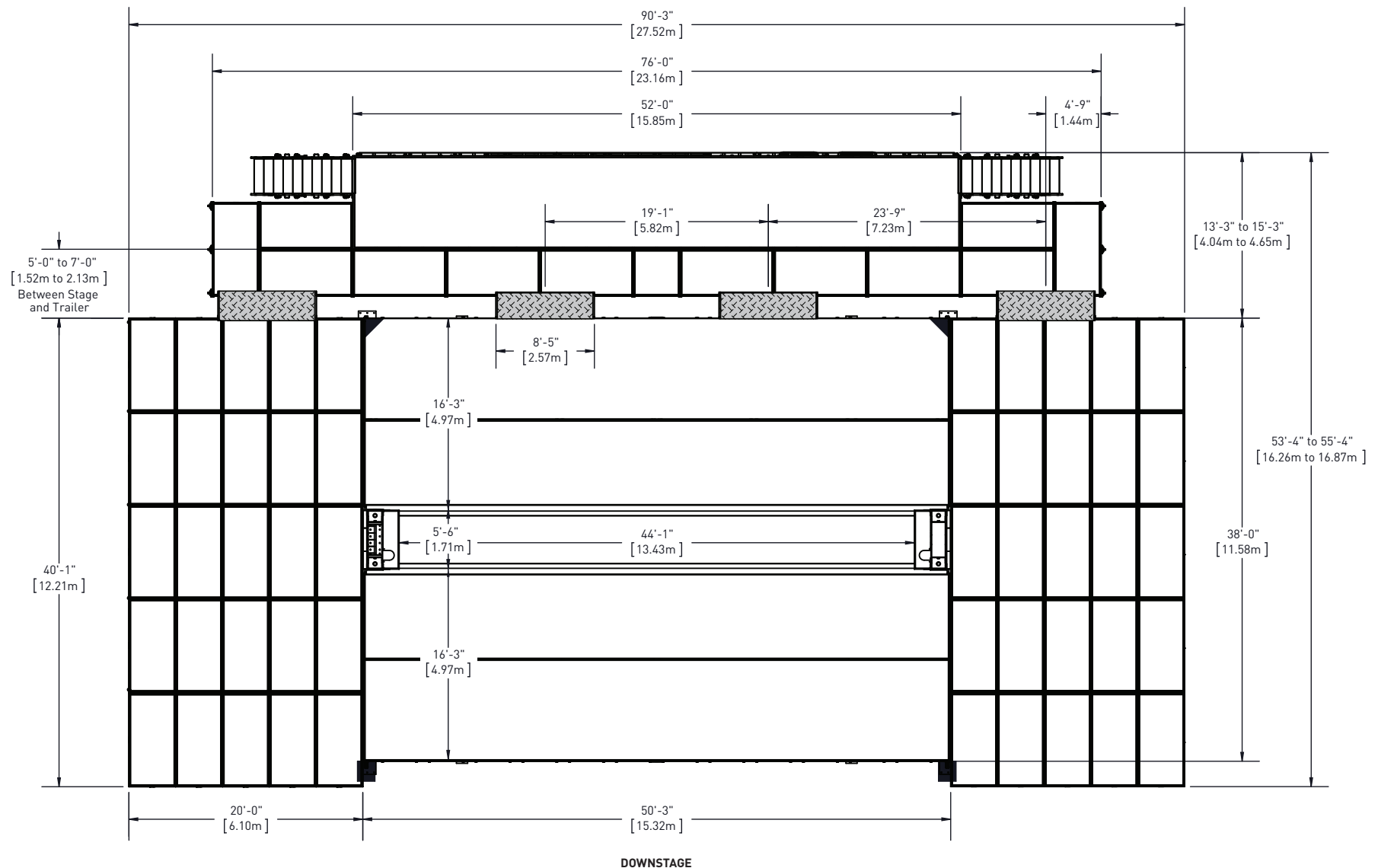


WINDWALL

Drawings may show stage equipped with optional accessories. May be purchased separately.

© 2015 - R01 - All rights reserved, Stageline Mobile Stage Inc. Any and all forms of adaptation or reproduction of this document including plans and drawings found herein, in whole or in part, are strictly forbidden without the written authorisation of Stageline Mobile Stage Inc. Mass may vary depending on options. Technical specifications may change without notice. Stage specifications subject to change without notice. Figures are nominal.

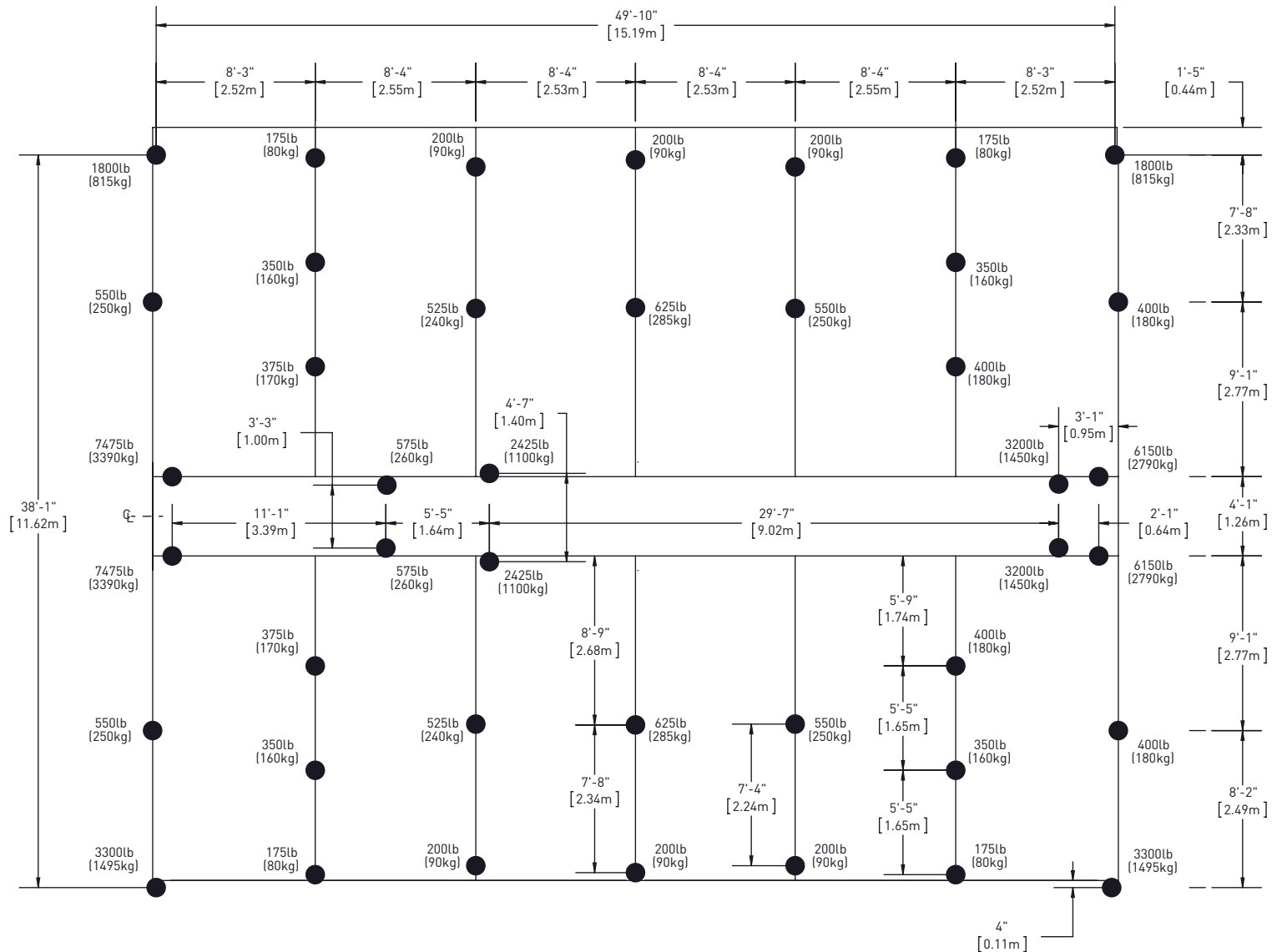
stageline.com | info@stageline.com



CAPACITY: 100lbs/ft² [490kg./m²]

Drawings may show stage equipped with optional accessories. May be purchased separately.

© 2015 - R01 - All rights reserved, Stageline Mobile Stage Inc. Any and all forms of adaptation or reproduction of this document including plans and drawings found herein, in whole or in part, are strictly forbidden without the written authorisation of Stageline Mobile Stage Inc. Mass may vary depending on options. Technical specifications may change without notice. Stage specifications subject to change without notice. Figures are nominal.



● FLOOR STABILIZERS, EXTENSIONS AND LEVELLING JACKS

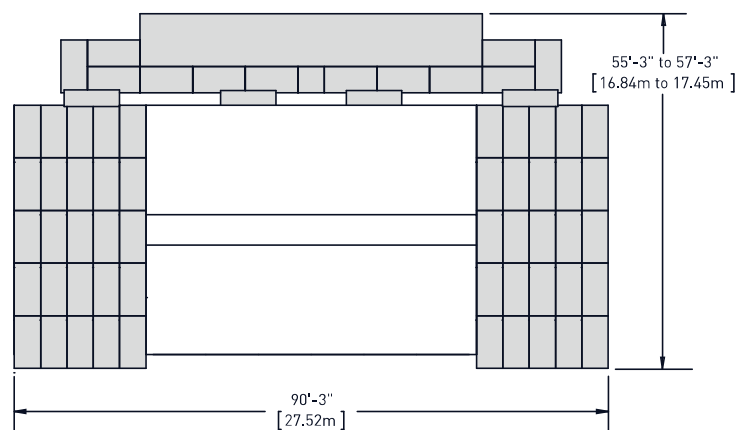
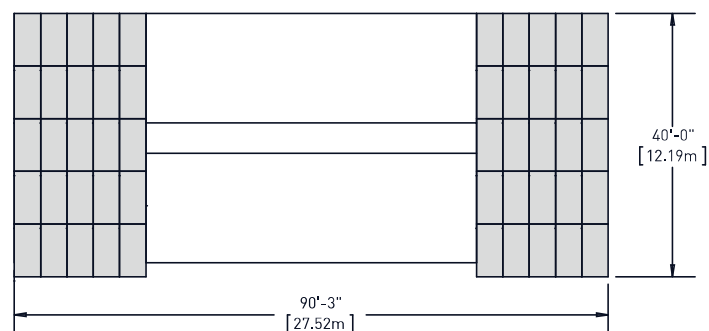
Drawings may show stage equipped with optional accessories. May be purchased separately.

© 2015 - R01 - All rights reserved, Stageline Mobile Stage Inc. Any and all forms of adaptation or reproduction of this document including plans and drawings found herein, in whole or in part, are strictly forbidden without the written authorisation of Stageline Mobile Stage Inc. Mass may vary depending on options. Technical specifications may change without notice. Stage specifications subject to change without notice. Figures are nominal.



# SAM 575 COVERED WINGS

## EXTENSION PLATFORM LAYOUT AND LOADING DOCK



PLATFORM 4'-0" x 8'-0" [ 1.22m x 2.44m ]

Drawings may show stage equipped with optional accessories. May be purchased separately.

© 2015 - R01 - All rights reserved, Stageline Mobile Stage Inc. Any and all forms of adaptation or reproduction of this document including plans and drawings found herein, in whole or in part, are strictly forbidden without the written authorisation of Stageline Mobile Stage Inc. Mass may vary depending on options. Technical specifications may change without notice. Stage specifications subject to change without notice. Figures are nominal.

[stageline.com](http://stageline.com) | [info@stageline.com](mailto:info@stageline.com)

A thorough understanding of the inter-related loadings shown in this rigging plan is needed in order to safely use this mobile stage roof and to take full advantage of the many rigging opportunities it offers.

This mobile stage roof offers a variety of rigging options with regard to load capacity, placement and type.

There are trusses, rigging pipes, front overhang rigging pipes, side overhang rigging beams, line array rigging beams and roof rigging points.

This rigging plan locates and defines these rigging features, includes load capacity for each and describes maximum combinations of loads amongst features.

Take note of exclusions, maximum sub-totals in a group, load balance requirements, maximum lifting capacity of roof and maximum rigging load on roof.

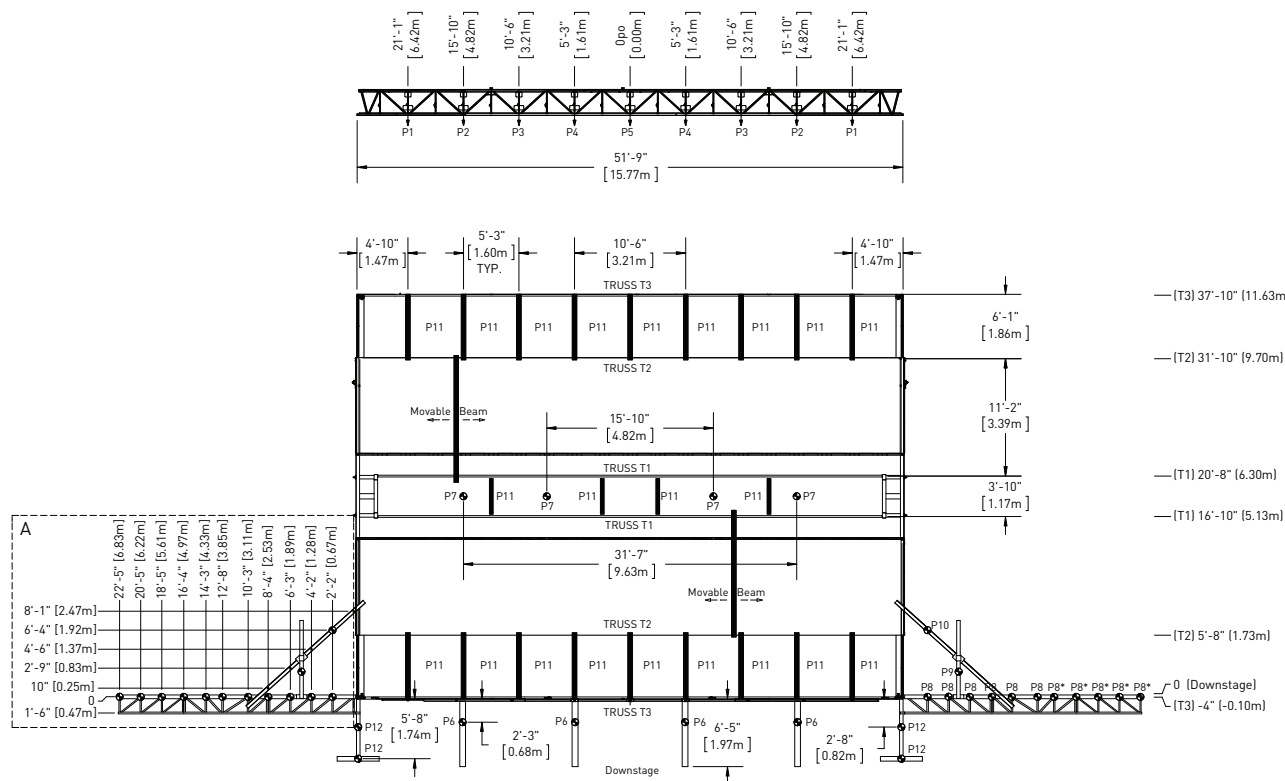
The maximum load on the roof is less than the sum of the maximum load on each rigging feature.

### RIGGING RESTRICTIONS:

- Use P1s or P2s or P3s or P4s or P5 alone.
- The sum of all rigging points shown in area A of both sides of roof cannot exceed 12000 lb (5445 kg)
- Total load on P9 and P10 must not exceed 4000 lb (1815 kg) per side.
- When P8\* are used, total load at these points shall not exceed 2000 lb (910 kg) on one side.
- Total load on P6s must not exceed 2000 lb (910 kg) per side.
- Total load on P12s must not exceed 3000 lb (1360 kg) per side.
- Loads on P6s and P11s points must be considered as a load on their respective adjoining truss(es) points.

### NOTES:

Distance between each lower chord node on T1s, T2s and T3s is 31.5" (0.80m). Line array (Option) can be positioned at 2'2" (0.67m), 4'2" (1.28m) or at 6'3" (1.89m) from roof extension panel.



MAXIMUM LOAD BEARING CAPACITY: 94 000 lb (42 637,68 kg)

### TRUSSES CAPACITY

	P1	P2	P3	P4	P5
T3 Upstage	5000 lb (2270 kg)	4000 lb (1815 kg)	3000 lb (1360 kg)	2000 lb (910 kg)	3000 lb (1360 kg)
T2	5000 lb (2270 kg)	4000 lb (1815 kg)	4000 lb (1815 kg)	4000 lb (1815 kg)	6000 lb (2720 kg)
T3 Downstage	7000 lb (3175 kg)	6000 lb (2720 kg)	4000 lb (1815 kg)	2500 lb (1135 kg)	4500 lb (2040 kg)

### MAXIMUM LOAD CAPACITY

Point No.	Lb	Kg
P9, P10 & P11	4000	1815
P6, P7, P8 & P8*	2000	910
P12	3000	1360